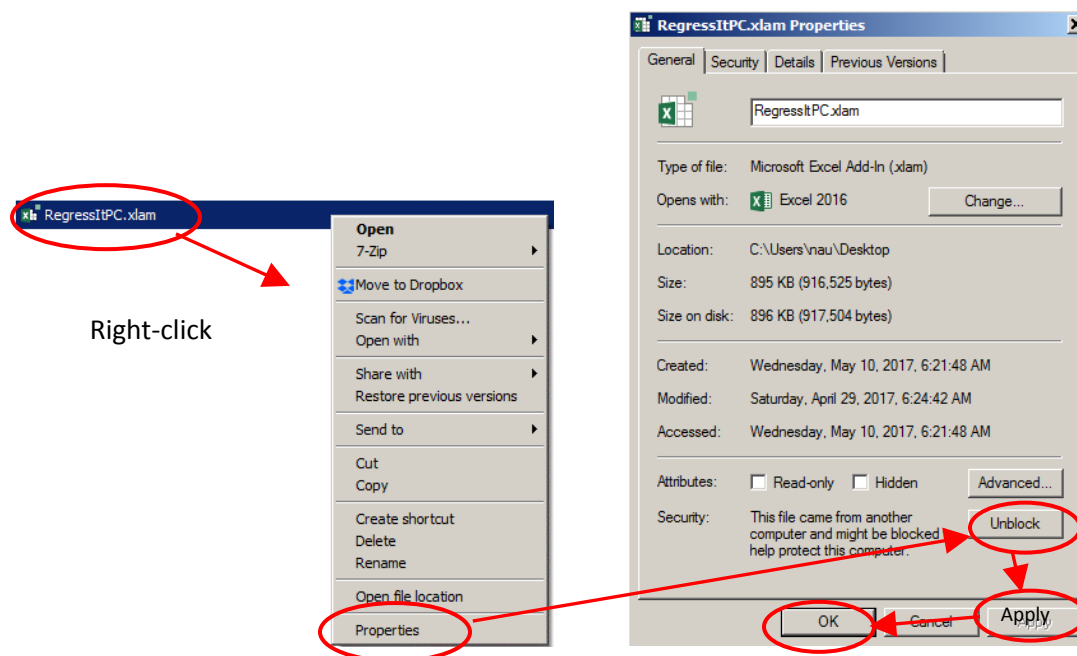


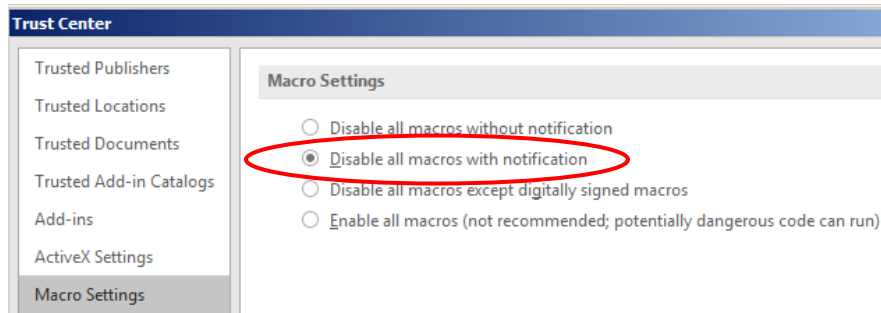
RegressIt

RegressItPC test instructions (Jan. 3, 2018)

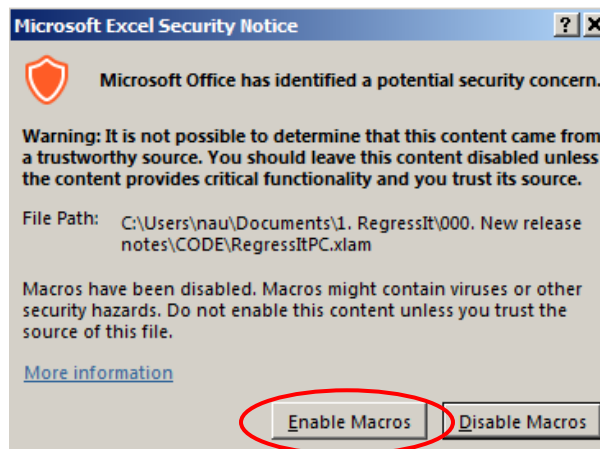
1. **Download the program file and test file** (RegressItPC.xlam and RegressItPCTest.xlsx) to your desktop or some other convenient location. To do this, proceed as follows. Go to the “Download” web page on the RegressIt site, whose URL is <http://regressit.com/download.html> Then click or right-click on the link for each file you want to download, choose the “Save-as” option, and choose the desired location for saving (for example, your desktop).
2. After downloading the files, **check to see that the program file is unblocked.** (Executable files that have been downloaded from the internet are often blocked by default.) Right-click on RegressItPC.xlam, then click Properties at the bottom of the pop-up list that appears, then look at the bottom of the General tab and see if there is an “Unblock” button at the bottom. If you see this, click on it, then click the “Apply” button that appears below, followed by OK. Then unblock button will disappear, and you can click OK. You will only have to do this once.



3. Launch Excel and **open the test file first.** Don’t open the program file just yet.
4. Check your **macro security** settings. Go to **File/Options/Trust Center/Trust Center Settings/Macro Settings.** The setting needs to be “Disable all macros with notification.” This means that macro files are not enabled by default, but you will have the option to enable them when they are loaded. If this setting is not chosen, RegressIt will not launch. This is something else that only needs to be checked once.

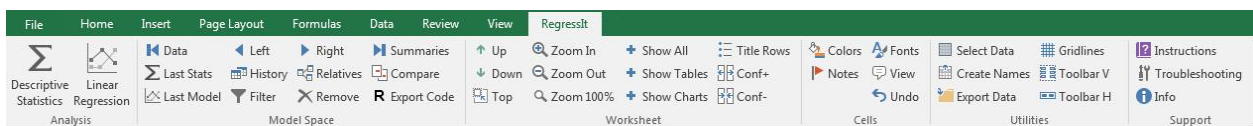


5. **Open the program file.** You should get a pop-up box with a scary message that says “Microsoft has identified a potential security concern” (namely that you are trying to open an executable file). Click the “Enable Macros” button at the bottom of the box.



Note: it is possible to install RegressIt on the Excel add-ins menu, in which case it will appear automatically in future sessions without the security prompt. Just copy its program file into the folder **C:/Program Files/Microsoft Office/Office xx/Library**. (If you have the 32-bit version of Office rather than 64-bit, use Program Files(x86) instead.) Then go to **File/Options/Add-ins/Go** to activate it. However, we recommend that you NOT do this during the test phase. Rather, you should re-open its file each time you start a new Excel session in which you want to use it. If you do choose to install it on the add-ins menu at some point, don’t install it multiple times under different names or in different locations. If you need to upgrade to a new version, replace the originally installed file with another copy with the same name.

6. You should see a RegressIt tab appear on the ribbon at the top of the screen, and if you click on it you should see the **RegressIt ribbon** appear:



7. **Click the “Toolbar V” button, which will launch the vertical floating toolbar. Then close it and click the “Toolbar H” button to launch the horizontal floating toolbar, and then close it.** (This step is just to illustrate the alternative menus.) The vertical floating toolbar can also be launched by hitting Ctrl-G. If the RegressIt ribbon does not appear after you have opened its file and clicked through the enable-macro prompt, then you should hit Ctrl-G to see if it is actually running. It is possible that the

ribbon isn't working but the program is otherwise active. If that is the case, you will still have its full functionality. You can also launch the horizontal toolbar from the vertical one and vice versa.

- Look at the test file contents.** The first worksheet in the test file is the data sheet. There are 250 rows of data, and the last 5 values of Y are missing. The models will generate forecasts for them.

	A	B	C	D	E	F	G	H
1	Date	X_1	X_2	X_3	X_4	X_5	Y	
2	1/1/1997	26	8	505	34.5	-0.0076	158	
3	2/1/1997	43	-6	430	50.8	-0.0458	165	
4	3/1/1997	27	-12	415	32.9	-0.0174	152	
245	4/1/2017	28	8	446	37.4	-0.0362	164	
246	5/1/2017	41	0	535	44.9	-0.0391	179	
247	6/1/2017	41	21	555	50.8	-0.0340		
248	7/1/2017	36	-6	516	41.6	-0.0069		
249	8/1/2017	35	0	528	39.8	0.0050		
250	9/1/2017	46	-2	397	49.2	-0.0212		
251	10/1/2017	27	20	451	27	0.0178		
252								

The worksheet tabs at the bottom of the data worksheet will look like this:

<	>	Data	Stats 1	Stats 2	Stats 3	Model 1.0	Model 2.0	Model 3.0	Model 4.0	Model 5.0	Model Summaries
---	---	-------------	---------	---------	---------	-----------	-----------	-----------	-----------	-----------	-----------------

- Re-run each of the analyses.** Just go to each of the stats and model sheets in turn and hit the **Descriptive Statistics** or **Linear Regression** button on the ribbon, according to the sheet type, then hit Run in the dialog box. The settings for the analysis on a given sheet will be picked up automatically as the defaults for the next one. **Begin by re-running the Stats 1 analysis, and watch the progress reports in the green status bar in the lower left corner of the screen** Toward the end, you will see it count up to 36 scatterplots. (It may be a little hard to see these against the dark green background. They will flash by in about 5 seconds if you have a fast computer, in which case you may not even notice them.) When the analysis finishes, all the tables and charts on the new worksheet will be hidden at first, and only their title rows will appear. This is done because there could potentially be very large tables or very large numbers of charts. **Click the "Show All" button on the ribbon to unhide all the output.**
- After running the Stats 1 analysis, **save the file under a new name (say, RegressItPCTest1)**, and save it again after each new analysis is run so that you will have a backup point in case anything goes wrong. (You don't need to change the name on each subsequent run if it ran OK.) Then **go to the other two descriptive stats worksheets and the five regression model worksheets and re-run them.** (You will also need to unhide the output for Stats 2.) When Model 1.0 run is re-run, the default name of the new model will be Model 1.1, and so on.
- You are encouraged to play with the other buttons on the menu to try out the other features. **Notice that there are 3 layers of internal documentation in RegressIt, which provide you with explanations of the program features.** First, if you hold the mouse over one of the buttons on the ribbon, you will see a pop-up box with a brief description of its function. Second, if you click the plus (+) symbols in the Linear Regression dialog box, you will see pop-up boxes with fairly detailed descriptions of the model options. Third, if you choose the **teaching-notes** option when running the model, the output worksheet will contain teaching notes in the form of cell comments attached to title rows and column headings. The presence of a cell comment is indicated by a red flag that appears in the corner of the cell. (Click the Notes button on the ribbon to toggle the flags on and off.) If you move the mouse over

a cell that contains a comment, or if you click on the cell and hit the View button on the ribbon, you will see it displayed.

If you encounter any technical problems such as a hard or soft crash or an output worksheet that appears to be incomplete or which has visible gridlines instead of a white background, here's what to do.

- a. If an error message appears on the screen, try to write down what it says (or better, take a screen shot of it by hitting Ctrl-PrintScreen). Also make a note of what procedure or command you were trying to execute when it occurred.
- b. If it was a soft crash (one that did not cause an exit from Excel), also save the analysis file in its crashed condition, giving it a new name. (Do not try to run any further analyses in a file where a crash has occurred.)
- c. Re-boot the computer and restart Excel and RegressIt with no other non-critical software running, and try to reproduce the problem, starting from a clean copy of the original analysis file.
- d. Please note that in your language and region settings, **decimal number formats** should be set to those commonly used in the U.S. while RegressIt is running. In particular, **the grouping separator should be a comma and the decimal separator should be a period**, not the other way around. For example, the number "one thousand and one and one-half" should appear on your Excel screen as "1,001.5". See the **number format settings** document on the download page for more details. In some cases it may also be advisable to set the primary language to English, if that is not already your default, although this is generally not necessary. You do not need to make these changes permanently. They just need to be in effect at the start of an Excel session in which you are actively using RegressIt, and you can change them back to your usual standard afterward.
- e. Send an e-mail to support@regressit.com with a brief description of what occurred, i.e., what analysis or button option you were trying to use when the crash occurred and what was the error message, if any, that you saw, and whether it was reproducible. Also attach the file you were working with, if it is not confidential. If it was a soft crash, attach the post-crash version of the file that you saved. If it was a hard crash, attach the most recent pre-crash version of the file. If you took a screen shot of an error message, please attach that too.

If you do **not** encounter any technical problems, we would still welcome any comments you might have. You can send them to feedback@regressit.com . Thanks for your help in a good cause!