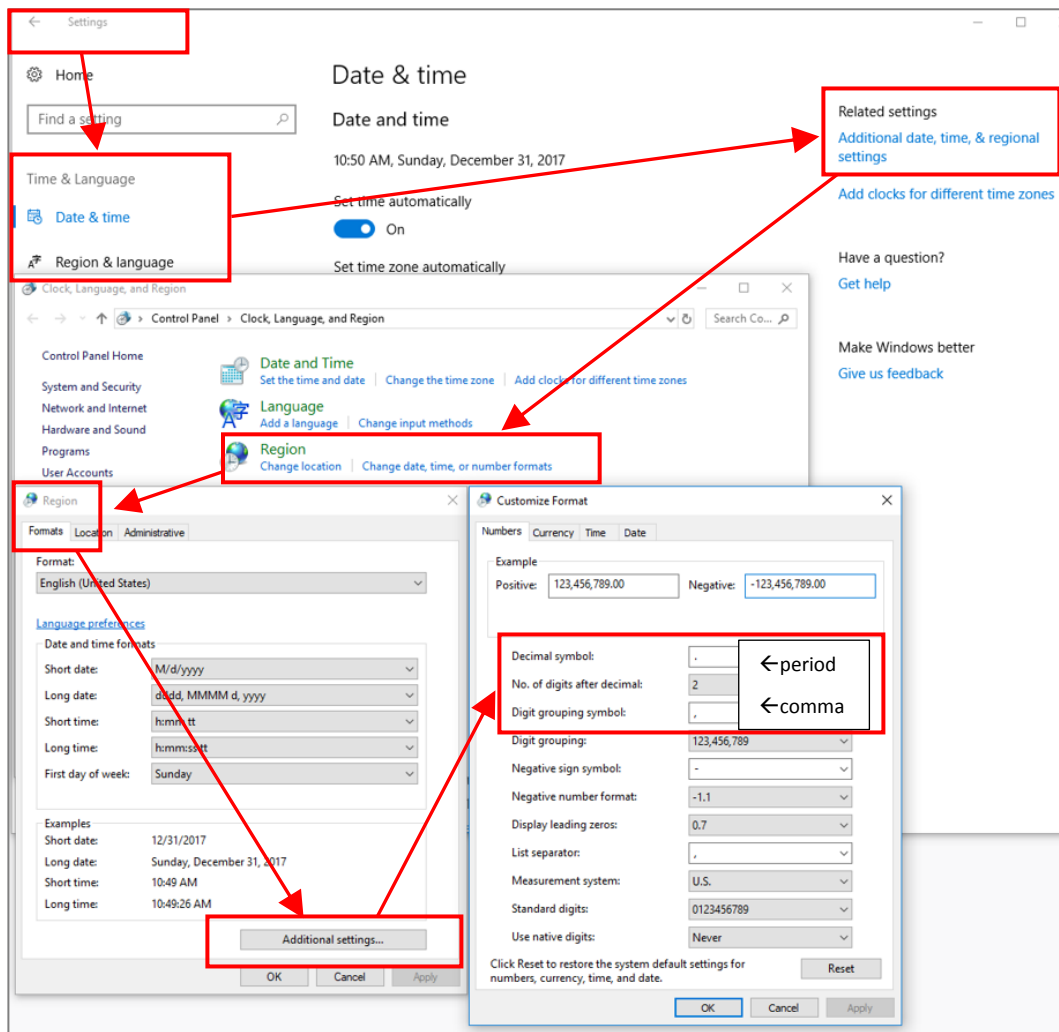


## RegressItPC language and number format settings (Jan. 3, 2018)

RegressIt requires numbers to be formatted according to the U.S. English standard, in which a *comma* is the *grouping* separator and a *period* is the *decimal* separator, during your analysis session. For example, the number “one thousand and one and one-half” should appear on your screen as “1,001.5”<sup>1</sup>. If you normally do it the opposite way, it is not hard to change the settings on your computer before starting Excel and to restore your usual settings after exiting from it. (It should not be necessary to re-boot.) If you later restart Excel and open a RegressIt analysis file with your own number formatting in place, the numbers will be formatted according to that standard, i.e., the number formatting that RegressIt uses while it is running is not permanently recorded in the file. The instructions given below describe how to change the number formatting on a PC.

**In Windows 10, go to Settings/Time and Language/Related ... Regional Settings/Region/Formats/Additional Settings/Customize Format and change the decimal symbol to a period and the digit grouping symbol to a comma.**



<sup>1</sup> It is generally OK to have non-U.S. language and currency and measurement units otherwise. However, the Euro Currency Tools add-in cannot be used during a RegressIt session, and RegressIt will turn it off automatically, if necessary, when it is launched.

In Windows 7, go to Control Panel/Region and Language/Formats/Additional Settings/Numbers and change the decimal symbol to a period and the digit grouping symbol to a comma.

